

Ancillaries

Mud line



MUD LINE

Soilmec offer a machine, a technology and a solution to meet foundation needs. A comprehensive and technologically advanced jobsite, enriched by IPC technology with highly performing auxiliary equipment and accessories in a Mud product line dedicated to the use of bentonite and slurry.

Mud treatment unit

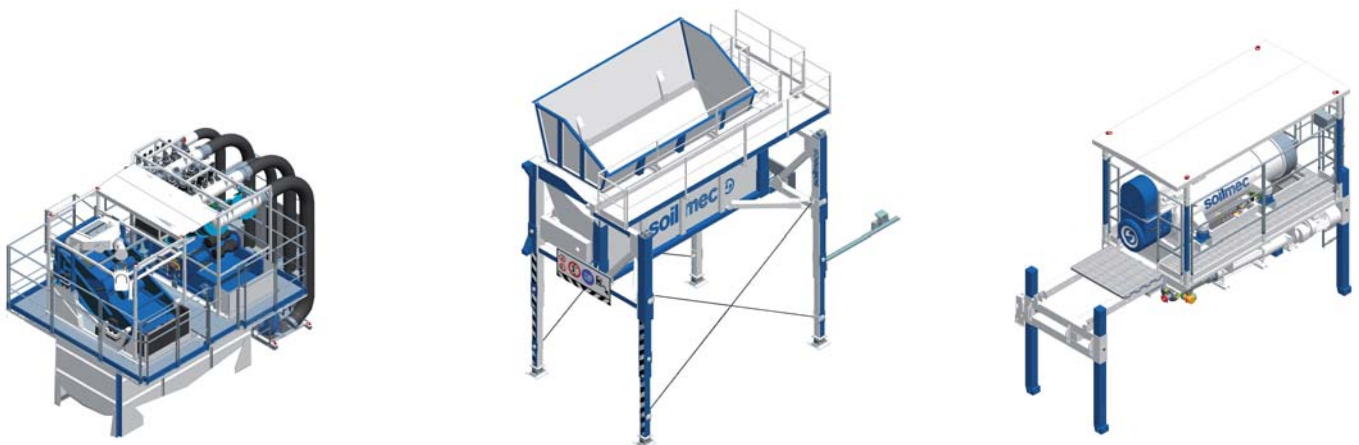
The mud treatment unit specially developed in hydromill technologies is multipurpose.

A line for the job site located in large areas:

- Flat version composed by the SMT-500 c/w a single stage storage
- Flat Plus version composed by SMT-500 flat c/w the SMD-90 mud decanter centrifuge

A line dedicate for this entire job site located in the urban areas:

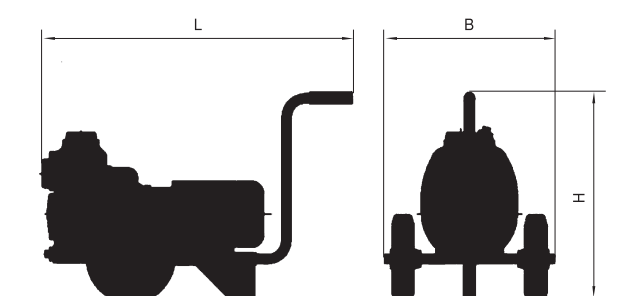
- the City version composed by the SMT-500 c/w Soilmec double stage storage
- the City Compact version composed by the SMT-500 City c/w Soilmec detritus management SDM-35
- the City Compact Plus Version composed by SMT-500 City Compact c/w the SMD-90 mud decanter centrifuge



SMT-500		
Nominal flow rate (on water)	500 m3/h	294.29 ft3/min
Max feed density	1,25 t/m3	78.03 lb/ft3
Approx. Solid separation	200 t/h	220.46 ton/h
Power supply	400 V @ 50 Hz (Opz: 480 V @ 60 Hz)	400 V @ 50 Hz (Opz: 480 V @ 60 Hz)
Installed power	207,6 kW	278.40 HP
Hydrociclones I stage nominal size	2 x 380 mm	2 x 15 in
Cut point D50	60 micron	60 micron
Hydrociclones II stage nominal size	15 x 100 mm	15 x 4 in
Cut point D50	20 micron	20 micron
SMD-35		
Storage capacity	35 m3	1236.01 ft3
Installed power	39,6 kW	53.10 HP
Discharge flow rate	240 m3/h	141.26 ft3/
Screw conveyer speed	17,9 rpmg	17.9 rpm
Integrated control system	Fully monitored solid production And automatic or manual setting discharge system	
SDM-90		
Structure	containerized or retractable skid	containerized or retractable skid
Bowl inside diameter / length	590 / 2200 mm	23 / 87 in
Installed power	120 to 245 kW	161 to 329 HP
Max torque*	6 to 15 kNm	4425 to 11063 lbf*ft

Centrifugal self-priming pumps

The centrifugal self-priming pumps Beta, Delta and Grinta series have an open impeller suitable for the passage of solids in suspension in the liquid to be pumped. The pump casing and the impeller are in high-resistance cast iron. The pump is mono-bloc without belts, pulleys, bearings or other metallic parts in contact.



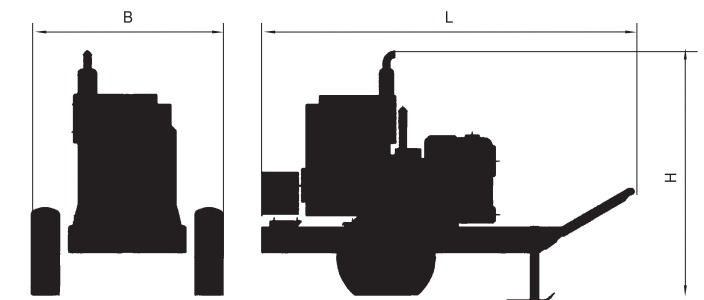
BETA SERIES	60 ET	60 ET	60DS	60DS	80/2ET	80/2ET
- L	839 mm	33 in	1400 mm	55 in	1280 mm	50 in
- B	4600 mm	181 in	460 mm	18 in	642 mm	25 in
- H	570 mm	22 in	570 mm	22 in	663 mm	26 in
- Dry weight	50 kg	110 lb	123 kg	271 lb	96 kg	212 lb

TECHNICAL DATA						
- Max. delivery	700 l/min	185 US gal/min	600 l/min	159 US gal/min	1320 l/min	349 US gal/min
- Max. head	12 m	39 ft	16 m	52 ft	20 m	66 ft
- Max. speed	2850 rpm	2850 rpm	3000 rpm	3000 rpm	2900 rpm	2900 rpm
- Motor	Electric	Electric	LOMBARDINI 15 LD 315	LOMBARDINI 15 LD 315	Electric	Electric
- Rated power	2,2 kW	3 HP	3,7 kW	5 HP	4 kW	5 HP
- Max Power			5 kW	7 HP		
- Max. suction depth	6 m	20 ft	6 m	20 ft	6 m	20 ft
- Suction port dia.	50,8 mm	2 in	50,8 mm	2 in	76,2 mm	3 in
- Delivery port dia.	50,8 mm	2 in	50,8 mm	2 in	76,2 mm	3 in
- Solid passage	31 mm	1 in	31 mm	1 in	38 mm	1.5 in

BETA SERIES	80/2DS	80/2DS	100DS	100DS
- L	1635 mm	64 in		
- B	890 mm	35 in	1635 mm	64 in
- H	1130 mm	44 in	890 mm	35 in
- Dry weight	206 kg	454 lb	1130 mm	44 in

TECHNICAL DATA				
- Max. delivery	1400 l/min	370 US gal/min	2500 l/min	661 US gal/min
- Max. head	22 m	72 ft	19 m	62 ft
- Max. speed	3000 rpm	3000 rpm	3000 rpm	3000 rpm
- Motor	LOMBARDINI 3LD 510	LOMBARDINI 3LD 510	LOMBARDINI 4LD820	LOMBARDINI 4LD820
- Rated power	6,6 kW	9 HP	10,3 kW	14 HP
- Max Power	9 kW	12 HP	13 kW	17 HP
- Max. suction depth	6 m	20 ft	6 m	20 ft
- Suction port dia.	76,2 mm	3 in	101,6 mm	4 in
- Delivery port dia.	76,2 mm	3 in	101,6 mm	4 in
- Solid passage	38 mm	1.5 in	44 mm	2 in

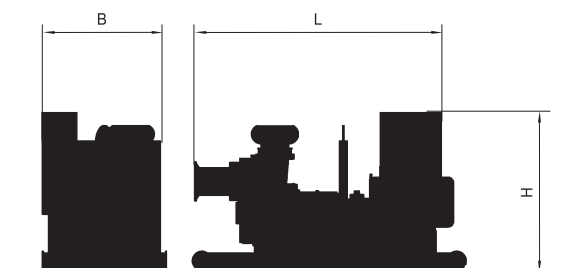
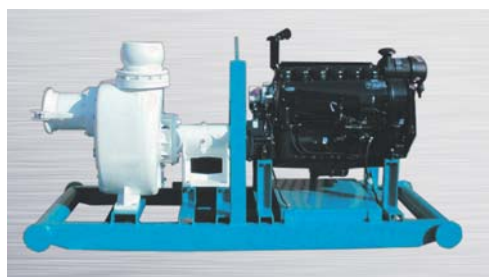
MUD LINE



DELTA SERIES	80/2ET	80/2ET	80/2DS	80/2DS	120/2ET	120/2ET
- L	1210 mm	48 in	1400 mm	55 in	1400 mm	55 in
- B	830 mm	33 in	1160 mm	46 in	1000 mm	39 in
- H	920 mm	36 in	1160 mm	46 in	1160 mm	46 in
- Drawbar dimension	450 mm	18 in	450 mm	18 in	450 mm	18 in
- Dry weight	217 kg	478 lb	405 kg	893 lb	307 kg	677 lb
TECHNICAL DATA						
- Max. delivery	950 l/min	251 US gal/min	1660 l/min	439 US gal/min	2000 l/min	528 US gal/min
- Max. head	12 m	39 ft	16 m	52 ft	14 m	46 ft
- Max. speed	1450 rpm	1450 rpm	3000 rpm	3000 rpm	1450 rpm	1450 rpm
- Motor	Electric	Electric	LOMBARDINI 12LD 477-2	LOMBARDINI 12LD 477-2	Electric	Electric
- Rated power	7,5 kW	10 HP	9,5 kW	13 HP	11,0 kW	15 HP
- Max Power			16 kW	21 HP		
- Max. suction depth	6 m	20 ft	6 m	20 ft	6 m	20 ft
- Suction port	80 mm	3 in	80 mm	3 in	101,6 ÷ 127 mm	4 ÷ 5 in
- Delivery port	80 mm	3 in	80 mm	3 in	101,6 ÷ 127 mm	4 ÷ 5 in
- Solid passage	30 mm	1 in	30 mm	1 in	40 mm	2 in

DELTA SERIES	DELTA 120/2 DS	DELTA 120/2 DS	DELTA 120/S ET	DELTA 120/S ET	DELTA 120/S DS	DELTA 120/S DS
- L	1820 mm	72 in	1400 mm	55 in	1820 mm	72 in
- B	1160 mm	46 in	1000 mm	39 in	1150 mm	45 in
- H	1160 mm	46 in	1160 mm	46 in	1510 mm	59 in
- Drawbar dimension	450 mm	18 in	450 mm	18 in	450 mm	18 in
- Dry weight	563 kg	1241 lb	340 kg	750 lb	563 kg	1241 lb
TECHNICAL DATA						
- Max. delivery	2200 l/min	581 US gal/min	3200 l/min	845 US gal/min	4000 l/min	1057 US gal/min
- Max. head	22 m	72 ft	23 m	75 ft	35 m	115 ft
- Max. speed	2200 rpm	2200 rpm	1450 rpm	1450 rpm	2200 rpm	2200 rpm
- Motor	LOMBARDINI 5LD 825-2	LOMBARDINI 5LD 825-2	Electric	Electric	LOMBARDINI 5LD 825-2/L	LOMBARDINI 5LD 825-2/L
- Rated power	15,3 kW	21 HP	11 kW	15 HP	15,3 kW	21 HP
- Max Power	20 kW	27 HP	-	-	20 kW	27 HP
- Max. suction depth	6 m	20 ft	6 m	20 ft	6 m	20 ft
- Suction port	101,6 ÷ 127 mm	4 ÷ 5 in	101,6 ÷ 127 mm	4 ÷ 5 in	101,6 ÷ 127 mm	4 ÷ 5 in
- Delivery port	101,6 ÷ 127 mm	4 ÷ 5 in	101,6 ÷ 127 mm	4 ÷ 5 in	101,6 ÷ 127 mm	4 ÷ 5 in
- Solid passage	30 mm	1 in	28 mm	1 in	28 mm	1 in

DELTA SERIES	DELTA 150/2 DS	DELTA 150/2 DS	DELTA 150/S ET	DELTA 150/S ET	DELTA 150/S DS	DELTA 150/S DS
- L	1820 mm	72 in	1400 mm	55 in	2170 mm	85 in
- B	1210 mm	48 in	980 mm	39 in	1200 mm	47 in
- H	1160 mm	46 in	1140 mm	45 in	1420 mm	56 in
- Drawbar dimension	450 mm	18 in	450 mm	18 in	450 mm	18 in
- Dry weight	660 kg	1455 lb	375 kg	827 lb	745 kg	1642 lb
TECHNICAL DATA						
- Max. delivery	5000 l/min	1321 US gal/min	4925 l/min	1301 US gal/min	5000 l/min	1321 US gal/min
- Max. head	21 m	69 ft	22 m	72 ft	32 m	105 ft
- Max. speed	2200 rpm	2200 rpm	1450 rpm	1450 rpm	2200 rpm	2200 rpm
- Motor	LOMBARDINI LDW2204	LOMBARDINI LDW2204	Electric	Electric	LOMBARDINI LDW2204T	LOMBARDINI LDW2204T
- Rated power	22 kW	29 HP	15 kW	20 HP	30,5 kW	41 HP
- Max Power	29,4 kW	39 HP	-	-	38 kW	51 HP
- Max. suction depth	6 m	20 ft	6 m	20 ft	6 m	20 ft
- Suction port	152,4 mm	6 in	152,4 mm	6 in	152,4 mm	6 in
- Delivery port	152,4 mm	6 in	152,4 mm	6 in	152,4 mm	6 in
- Solid passage	38 mm	1 in	45 mm	2 in	38 mm	1 in



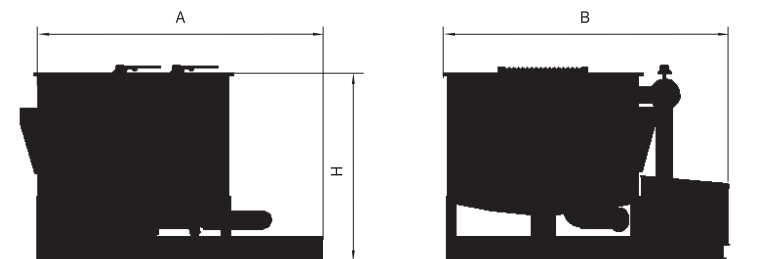
GRINTA SERIES	250DS	250DS
- L	2900 mm	114 in
- B	1220 mm	48 in
- H	1430 mm	56 in
- Dry weight	2065 kg	4552 lb
TECHNICAL DATA		
- Maximum delivery	13600 l/min	3593 US gal/min
- Maximum head	48 m	157 ft
- Max. speed	1800 rpm	1800 rpm
- Motor	Diesel	Diesel
- Rated power	100 kW	134 HP
- Max suction depth	6 m	20 ft
- Diam. In	254,0 mm	10 in
- Diam. Out	254,0 mm	10 in
- Solid passage		

GRINTA SERIES	200ET	200ET	200DS	200DS	250ET	250ET
- L	1790 mm	70 in	2750 mm	108 in	2690 mm	106 in
- B	1150 mm	45 in	1200 mm	47 in	1220 mm	48 in
- H	1400 mm	55 in	1450 mm	57 in	1550 mm	61 in
- Dry weight	680 kg	1499 lb	850 kg	1874 lb	1710 kg	3770 lb
TECHNICAL DATA						
- Maximum delivery	8500 l/min	2246 US gal/min	9700 l/min	2563 US gal/min	13600 l/min	3593 US gal/min
- Maximum head	18 m	59 ft	30 m	98 ft	48 m	157 ft
- Max. speed	1450 rpm	1450 rpm	1800 rpm	1800 rpm	1450 rpm	1450 rpm
- Motor	Electric	Electric	Diesel	Diesel	Electric	Electric
- Rated power	22 kW	29 HP	47 kW	63 HP	90 kW	121 HP
- Max suction depth	6 m	20 ft	6 m	20 ft	6 m	20 ft
- Diam. In	200 mm	8 in	200 mm	8 in	254,0 mm	10 in
- Diam. Out	200 mm	8 in	200 mm	8 in	254,0 mm	10 in
- Solid passage	60 mm	2 in	60 mm	2 in		

MUD LINE

Mixers

The Soilmec mixers is suitable to mix water and bentonite. The equipment is powered by electric motor or diesel engine that give the movement to a centrifugal pump which mixes the fluid.



Model	BE10 ET	BE10 ET	BE10 DS	BE10 DS
A	1910 mm	75 in	2060 mm	81 in
B	1920 mm	76 in	1920 mm	76 in
H	1330 mm	52 in	1410 mm	56 in
Dry weight	700 kg	1543 lb	925 kg	2039 lb
Tank capacity	1000 l	264 US gal	1000 l	264 US gal
Output per hour	10000÷12000 l	2642÷3170 US gal	10000÷12000 l	2642÷3170 US gal
Mixing time	5/6 min	5/6 min	5/6 min	5/6 min
Max. delivery	1960 l/min	518 US gal/min	2240 l/min	592 US gal/min
Head	22 m	72 ft	35 m	115 ft
Max. speed	1450 rpm	1450 rpm	1800 rpm	1800 rpm
Motor/engine	Electric	Electric	Diesel	Diesel
	11 kW 50 Hz IP65	11 kW 50 Hz IP65	5LD825-2 Lombardini	5LD825-2 Lombardini

Model	SBT-30	SBT-30	SBT-30.34	SBT-30.34
Type	skid or c/w silos	skid or c/w silos	Integrated silos 34 m3 storage	Integrated silos 34 m3 storage
Version	automatic	automatic	automatic	automatic
Volume batch	1250 dm3	44 ft3	1250 dm3	44 ft3
Mixing capacity	30 m3/h	1060 ft3/h	30 m3/h	1060 ft3/h
<i>determined c/w 50 kg bentonite for 1 m3 slurry</i>				

Desanders

The Soilmec desanding units are developed for the separation of sands, clay and organic particles in the bentonite muds recovery processes.



Model	BE-50	BE-50	SD-70	SD-70	SD-100	SD-100
stage	single	single	single	single	single	single
structure	skid	skid	skid	skid	skid	skid
cut point	60 D50 μm	197 D50 μft	60 D50 μm	197 D50 μft	60 D50 μm	197 D50 μft
installed power	11,5 kW	15 HP	15 kW	20 HP	18 kW	24 HP
feeding capacity determined on water	50 m ³ /h	1766 ft ³ /h	70 m ³ /h	2472 ft ³ /h	100 m ³ /h	3531 ft ³ /h

Model	SD-150	SD-150	SD-180	SD-180	SD-250	SD-250
stage	single or double	single or double	single or double	single or double	single or double	single or double
structure	skid	skid	skid	skid	skid	skid
cut point	60/35 D50 μm	197/114 D50 μft	60/35 D50 μm	197/114 D50 μft	60/35 D50 μm	197/114 D50 μft
installed power	24/48 kW	32/64 HP	28/54 kW	37/72 HP	48/75 kW	64/100 HP
feeding capacity determined on water	150 m ³ /h	5297 ft ³ /h	180 m ³ /h	6357 ft ³ /h	250 m ³ /h	8828 ft ³ /h

This brochure has been edited and distributed by SOILMEC Spa. The present document cancels and override any previous ones. This brochure shall not be distributed, reproduced or exhibited without SOILMEC Spa. authorization in accordance with to SOILMEC web site disclaimer condition.

SOILMEC Spa distributes machinery and structures all over the world, supported by SOILMEC Spa subsidiary companies and dealers. The complete Soilmec network list is available on the web site www.soilmec.it

www.soilmec.it

soilmec 
Drilling and Foundation Equipment