

soilmec®
Drilling and Foundation Equipment

The heart of
engineering
excellence





Building on experience

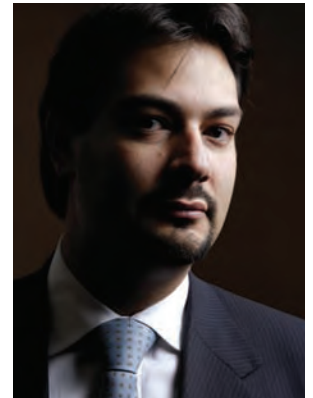
Almost 60 years ago, a young, ambitious Italian surveyor, Davide Trevisani founded Impresa Palificazioni TREVISANI Geom. DAVIDE, today known as Trevi SpA.

Davide, together with his entrepreneurial brothers Gianluigi and Cesare, went on to establish Soilmec, the renowned engineering arm of the Trevi Group.

Accompanied by a small group of men who knew about foundation engineering, they worked hard and believed in the future. They succeeded beyond imagination.

In the years that followed, Soilmec grew from being a small, family-run, ground engineering firm in the heart of Italy, to a global leader in the geotechnical field.

Today, Soilmec is known the world over for our unrivalled experience and passion for innovation. With perfectly designed equipment that is built to last, our cutting edge technology is breaking new ground in civil engineering.



Simone Trevisani
Managing Director, Soilmec

Our strengths

In the spirit of Italian tradition, Soilmec doesn't just talk. We create. Our strength lies in our common goals, our attention to detail, and our commitment to the communities in which we operate. But it is our passion for innovation and service that sets us apart from our competitors.

Global

Soilmec is currently active in over 70 countries, through a network of subsidiaries, agents and dealers.

Local support

Our unrivalled network guarantees clients a continuous technical and financial support, backed up with our excellent after-sale service. One of the main principles, inspiring our 800+ employees, is to develop close and rewarding relationships with our clients.

Experienced

With our heritage, forged from the Trevi Group, we have more than 55 years understanding and developing innovative solutions in ground engineering.

Engineering excellence

Soilmec is at the heart of engineering excellence, in a region that produces the most innovative and passionate engineering design that is the envy of the world.

Design culture

Is instilled into our entire work force, we don't just make our clients machine we design them a total solutions for any environment.

Environmentally aware

This is right at the heart of our company in our machine we seek to reduce our impacts and to eliminate environmental incident through proactive environmental management

Safe

We recognize that safety is a culture which must start at the top. Safety is paramount to the way we operate.

Integrity

Defies the very foundation of our business principles and is one of our most important qualities. It is the way we treat our clients, suppliers and partners, while also delivering our product process.



Our people

Person/people - the entire body of persons who constitute a community, tribe, nation, or other group by virtue of a common culture, history, religion, or the like.

“Our people are our most valuable asset. They are the foundation of our business.” - Soilmec CEO

It is they who provide the creativity, knowledge and experience that make Soilmec the world leader it is today. Whilst our machines are state of the art, it is our people who created them, designed them, built them, and tested them.

We believe our strength comes from the value we place on the individual, encouraging personal growth whilst fostering a culture of teamwork. Our ever-expanding team is spread across each corner of the world, but is linked by common values and identity. It is a team spirit that transcends geography and cultures, and provides the drive always to do better.

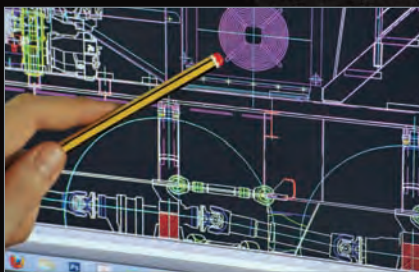
Our people lay the foundations and create the solutions for the engineering industry of tomorrow.



Whilst our machines are state of the art, it is our people who created them, designed them, built them, and tested them.



We strive to think out of the box and stay one step ahead of the industry.



Research & innovation

Research

Ricerca/research - diligent and systematic inquiry or investigation into a subject in order to discover or revise facts, theories, applications, etc.

All our work is based upon solid research. We think of problems ahead of time and provide solutions to keep your construction project on target.

Our products are the result of over forty years' cumulative experience and knowledge. Tested under the most difficult conditions to make sure they are safe, our machines have a life cycle of over 20 years, so they are cost effective as well as powerful.

Our technical team comprises over 90 design engineers, who are hard at work every day to develop new state-of-the-art solutions. Our equipment doesn't just do the job. It is designed to inspire.

Passion for Innovation

Innovazione/innovation - something newly introduced, such as a new method or device.

We are constantly striving to think ahead and reach new horizons, creating the unthinkable.

Our experience has shown never to say never. Time and again our people, united by a shared passion for innovation, have turned utopian ideas into reality. We aren't afraid of taking on new ideas or challenges. This boldness is the real engine that drives Soilmecc.

Whether working on a building's foundation or a dam, drilling a hole in the earth or under the sea, we address every technical challenge with its own unique solution.

We strive to think out of the box and stay one step ahead of the industry.





Servizi/service - the organized system of apparatus, appliances etc, for supplying some accommodation required by the public.

Soilmec products

PILES

Bored Piles (LDP)

- SR, STM & Cranes attachment rigs range

Continuous Flight Auger Piles (CFA)

- SF & SR rigs range

Cased Augered and Secant Piles (CAP/GSP)

- SF & SR rigs range

Displacement (DP)

- SR range

Reverse Circulation (RCDS)

Micropiles

- SM range

Product, technology and service

Soilmec today is an integral part of the Trevi Group, which is listed on the Milan Stock Exchange. Working seamlessly in partnership, Soilmec and Trevi share knowledge and expertise, as well as a commitment and passion towards developing services for our customers.

Whilst Soilmec designs, manufactures and distributes the machinery needed for any geotechnical applications, Trevi is the world leader in ground engineering works. As well as providing equipment for Trevi, we also provide equipment to the world.

We are proud to have been awarded international quality certifications UNI EN ISO 9001 and TÜV Quality. We see quality as the starting point for our services.

DIAPHRAM WALLS

Hydraulic & Mechanical grabs (DW)
- BH, GH & GC range

Foundation Cranes
- SC range

Hydromill
- "Tiger" & "Cougar" series

SOIL CONSOLIDATIONS

Jet Grouting (JG)
- SM rigs range

Turbojet® (TJ)
- SR rig range

Bottom feed system (BFS)
- SR rig range

TUNNEL

Tunnel consolidation
- ST range

GEOTHERMAL POWER

Geothermal Energy System
- SM-GT rigs range

SOIL INVESTIGATION

Geotechnical System
- SM-G & STM-G range

ANCILLIARIES

Drilling accessories
- Casing oscillators, extractor, vibrators & drilling tools

Mud line
- Mud treatment unit, mixers, self priming pumps & desanders

Grout line
- Agitars, Injectors, turbomixers, grout mixing plants, packers, high pressure pumps and mixing unit cointanerized

INSTRUMENT

DMS, APS, DPS



The Soilmec Group comprises:

- **Soilmec SpA**
- **PSM** (*microdrilling and tunneling*),
- **Watson** (*machinery for foundations*),
- **Ellettari** (*rigs manufacturing*),
- **IPC** (*production of drill rigs, tie rods and jet grouting*)
- **EGTECHNOLOGY** (*full range of back-up services including ancillary equipment, operator training and rental units*)



Housing

- *New*
- *Restructuring*
- *Seismic Retrofitting*

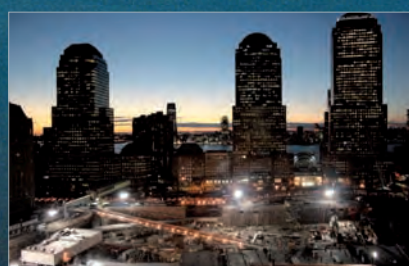


Real Estate

- *Condominiums*
- *Car Parking*

A complete portfolio

The Soilmec Group has the most technically advanced product portfolio, capable of dealing with any ground engineering situation, in any environment anywhere in the world. The next few pages demonstrate the complete range of our capabilities.



Industry

- Buildings
- Factories
- Goods Yard



Infrastructure

- Bridges/Flyovers
- Motorways/Railways
- Tunnels
- Ports
- Airports
- Subways
- Dams



Green Energy

- On-shore
- Off-shore

Local presence, global leader

Locale/local: characteristic of or associated with a particular locality or area.

Davide Trevisani felt strongly that his company should be based on solid values. His strong work ethics still permeate the company today. Whilst we are a global company, we take care to respect the communities and cultures in which we operate. Our guide, 'Model 231' helps to ensure that our organisation, management and control are in accordance with the Trevi Group's company policy. Our heritage of values – fairness, loyalty and honesty – serves to inspire our people, our loyal customers and our shareholders, and helps us to benefit from the support of local communities.

As an industry-leading company, Soilmec also takes its responsibility to the local environment seriously and we have been awarded environmental management certification UNI EN ISO 14001 and TÜV Environment. Indeed, our commitment to safeguarding the environment through noxious emissions reduction, waste management and noise pollution goes far beyond the benchmarks set by these certifications.

On all projects we undertake, we aim to work together with and for the benefit of the environment, in harmony with the local people, and with respect for their wishes.

Mondiale/global - pertaining to the whole world; worldwide; universal.

Whilst loyal to our Italian roots, Soilmec is today a truly international company. We are proud that our machines are used in more than 90 countries across all five continents.

Whether you are in Italy or Australia, North America or France, Denmark or the Arab Emirates, you can be sure to find Soilmec equipment working hard on jobsites. Our widespread and efficient distribution network comprises 45 offices including distributors, agents and subsidiary companies. We also have regional service depots across the globe ensuring excellent customer and after sales service. Our equipment is used in different environments with a variety of terrains, soil conditions and climates, and by people with varying levels of skill.

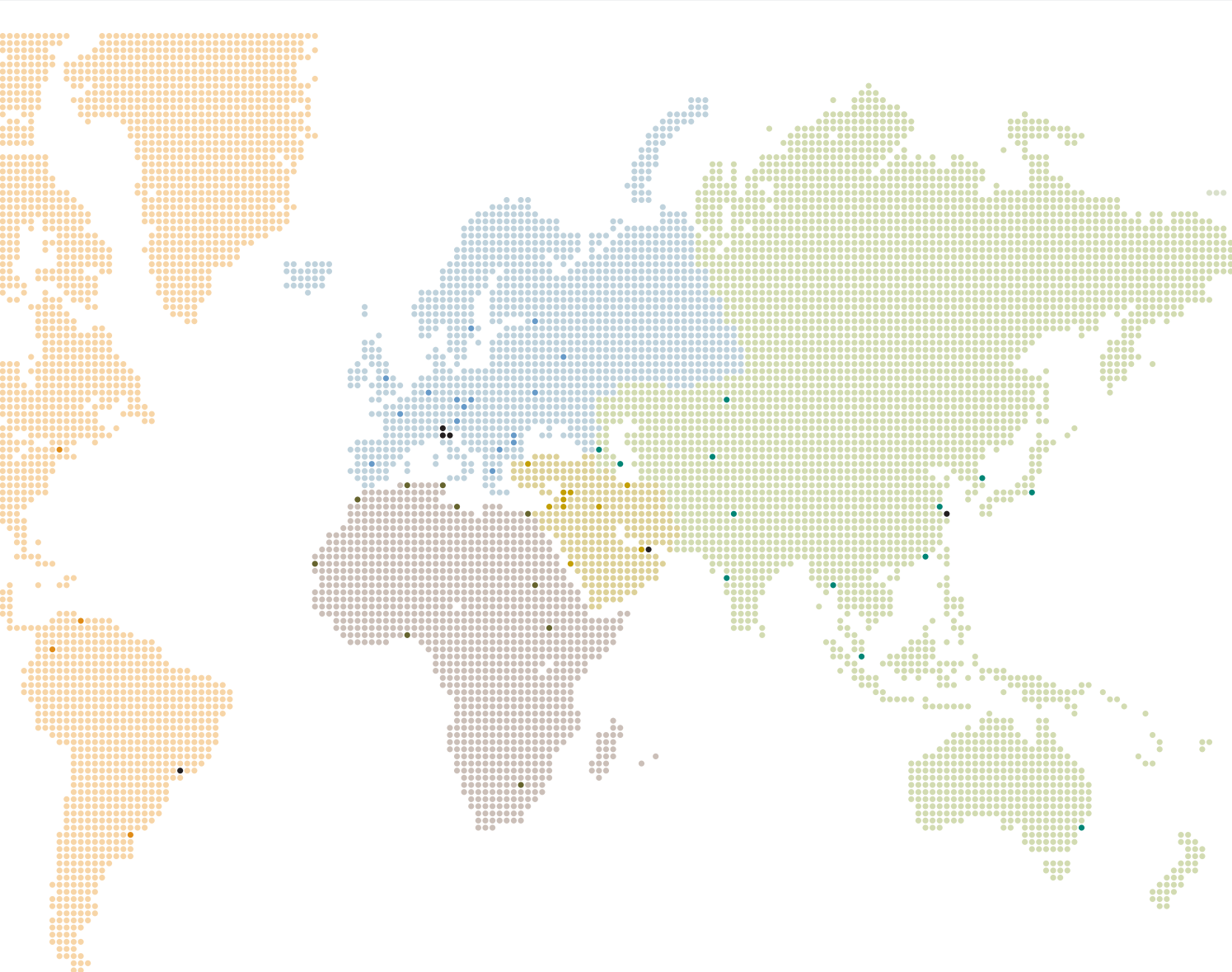
We ensure that no matter the language, culture, skills or environmental conditions, our equipment can always be used to maximum effect.



Americas

- Nisku, Canada
- East Providence, Rhode Island US
- Houston, Texas US
- Fort Worth, Texas US*
- Paramount, California US
- Salt Lake City, Utah US
- Mexico City, Mexico
- Caracas, Venezuela
- Bogotá, Columbia
- Sao Paulo, Brazil*
- Buenos Aires, Argentina

*We are proud that our machines
are used in more than 90 countries
across all five continents.*



Europe

Sofia, Bulgaria
Rijeka, Croatia
Prague, Czech Republic
Saint Aubin sur Gaillon, France
Drolshagen, Germany
Athens, Greece
Budaörs, Hungary
Asolo, Italy*
Cesena, Italy*
Parma, Italy*
Krakow, Poland
Bucharest, Romania
Voluntari, Romania
Moscow, Russia
St. Petersburg, Russia
Trzin, Slovenia
Madrid, Spain
Sala, Sweden
Kiev, Ukraine
Peterborough, United Kingdom

Africa

El Mohammadia, Algeria
New Cairo, Egypt
Addis Abeba, Ethiopia
Tripoli, Libya
Casablanca, Morocco
Lagos, Nigeria
Dakar, Senegal
Johannesburg, South Africa
Khartoum, Sudan
Tunis, Tunisia

Middle East

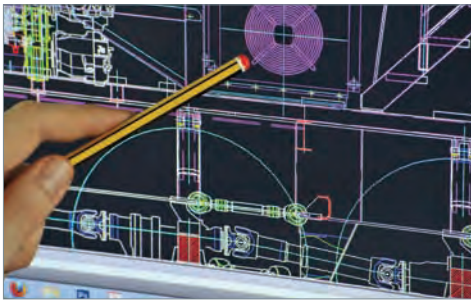
Tehran, Iran
Baghdad, Iraq
Baghdad, Iraq, Lebanon
Lod, Israel
Amman, Jordan
Ballouneh, Lebanon
Jeddah, Saudi Arabia
Damascus, Syria
Istanbul, Turkey
Dubai, United Arab Emirates
Fujairah, United Arab Emirates*

Asia & Australia

Sydney, Australia
Baku, Azerbaijan
Jiangsu, China
Shanghai, China*
Tbilisi, Georgia
Astana, Kazakhstan
Kowloon, Hong Kong
Mumbai, India
Tokyo, Japan
Yangon, Myanmar
Lahore, Pakistan
Singapore
Seoul, South Korea
Tashkent, Uzbekistan

*• Soilmec production facilities

Solutions provider



Engineering

At Soilmec, we pride ourselves on foreseeing challenges before they arise, and engineering technical solutions.

Information about how machines behave on-site, analysed and then archived by our latest-generation computerised monitoring and checking tools, allows our engineers to study how machines react when they encounter problems in real situations. This is our starting point for devising new solutions, improving existing products, and designing new ones.



Technology

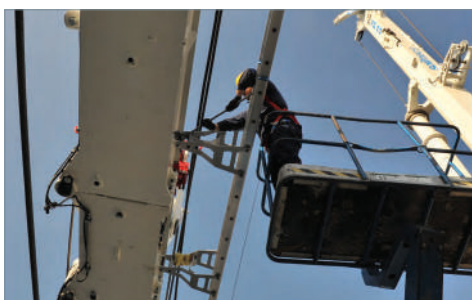
Our engineers call upon specially created technology tools to support the development of their designs. Soilmec has over 50 workstations available, equipped with CREO Parametric design software and five stations with PRO Mechanical or Ansys, for advanced structural and kinematical calculations.

There is no technology in the field of foundation engineering that can't be carried out through a Soilmec rig. A complete range of over 70 models allows performing any type of foundation in the field of piles, diaphragm walls, micropiles and consolidations of soil and tunnels.

Technologies that are currently under development – thanks to the synergies with the Trevi Group's companies – are: CAP (Cased Auger Piles), Hydromill and Turbojet.

At Soilmec, we pride ourselves on foreseeing challenges before they arise and engineering technical solutions.

Soilmec has become synonymous with first class customer service.



Service

Soilmec has become synonymous with first class customer service. From first contact with the company, our customers receive a full assistance service with top quality advice to help you purchase the equipment you need. We personalise products according to the job, share technology and ensure your staff receive intensive training to keep them safe on site.

We take pride in our after sales service, which is unrivalled in the industry. We will help you with any technical inquiry regarding your machinery, as well as any engineering problem you may face. We also ensure that our website is kept continually up-to-date to give our customers and dealers the latest information regarding our products and equipment.

One of our innovations, called Drill Mate System (DMS), provides invaluable data that greatly contributes to our research. All of our machines are fitted with a transponder that links a central control room at Soilmec to the machine's operator display. This means that we can monitor the machine's vital statistics, from drilling speeds and depth to the temperature of the engine. This data provides crucial information to our customers, and also helps to inform our research.

Our products are designed to last and you won't need to use our spare parts service often. However, when you do, we are available 24 hours a day, seven days a week. Our Spare Parts Online Centre allows you to download machine manuals, complete with information about operation and maintenance, wiring diagrams, hydraulic schematics, DMS, and transportation. To make ordering spare parts simple, we have ensured that customers and dealers can order whatever they need online and can check the availability of spare parts across Soilmec's worldwide network. We understand that reliability is crucial to your success and aim to deliver spare parts in record time, so you can keep operating.



Education

As well as investing in equipment and technology, our company's founders first and foremost believed in investing in Soilmec's greatest asset - our people - and to this day Soilmec employees receive continuous professional development and training. This includes safety training for employees and customers, which is a major priority at Soilmec, and has resulted in Soilmec having one of the lowest rates of work-related incidents in the whole industrial sector.

Our founders had a dream to pass on their passion for innovation to the wider community. In 2006, the Trevi Group fulfilled that dream and set up the Foundations Technology Academy (FTA), a unique worldwide training school. Maintenance mechanics, rig operators and anyone interested in learning about civil engineering can join the seminars and learn from theory as well as practical training.

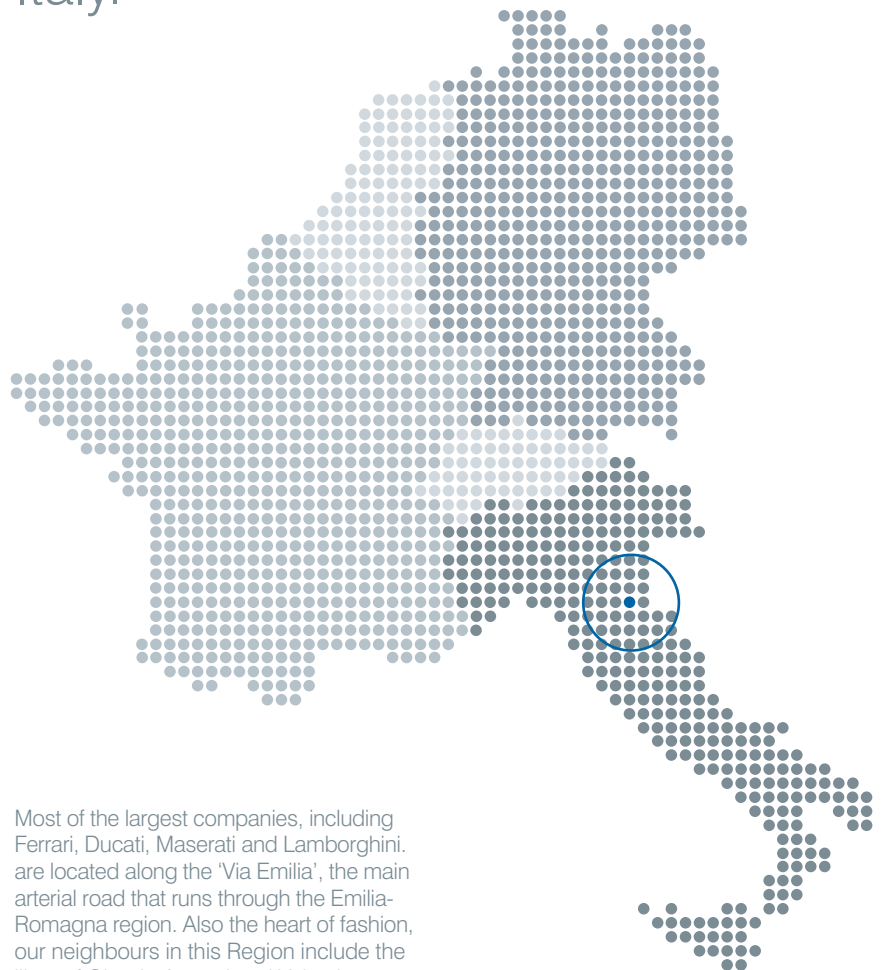
Soilmec is proud to invest in education, the engineering industry of the future.

Soluzioni/solution - a particular instance or method of solving; an explanation or answer

The heart of Italian engineering

Soilmec is now a truly global company but we remain deeply connected to our roots in the Emilia-Romagna region - the Mechanical Engineering Heart of Italy.

Our international headquarters to this day remain in Cesena, in the Emilia-Romagna region, which is known the world over for its culture of engineering and its heritage of excellence. With the regions close links to the German and French engineering centers, our manufacturing and supply chain could not be better situated.



Most of the largest companies, including Ferrari, Ducati, Maserati and Lamborghini, are located along the 'Via Emilia', the main arterial road that runs through the Emilia-Romagna region. Also the heart of fashion, our neighbours in this Region include the likes of Giorgio Armani and Valentino.

90% of our workforce and supply chain come from the Region, ensuring a highly skilled workforce and quality supplies. The passion for engineering in Cesena is like nowhere else and being here means we have access to the world's best engineers and innovation.



For further information...

If you would like further information about our company, products or services, please don't hesitate to get in touch. You can do this in a number of ways...

- Website	www.soilmec.com
- Email	soilmec@soilmec.it
- For general information please call	+39 0547 319111
- For sales, please call our sales department	+39 0547 319711
- For spare parts, please call our spare parts department	+39 0547 319286