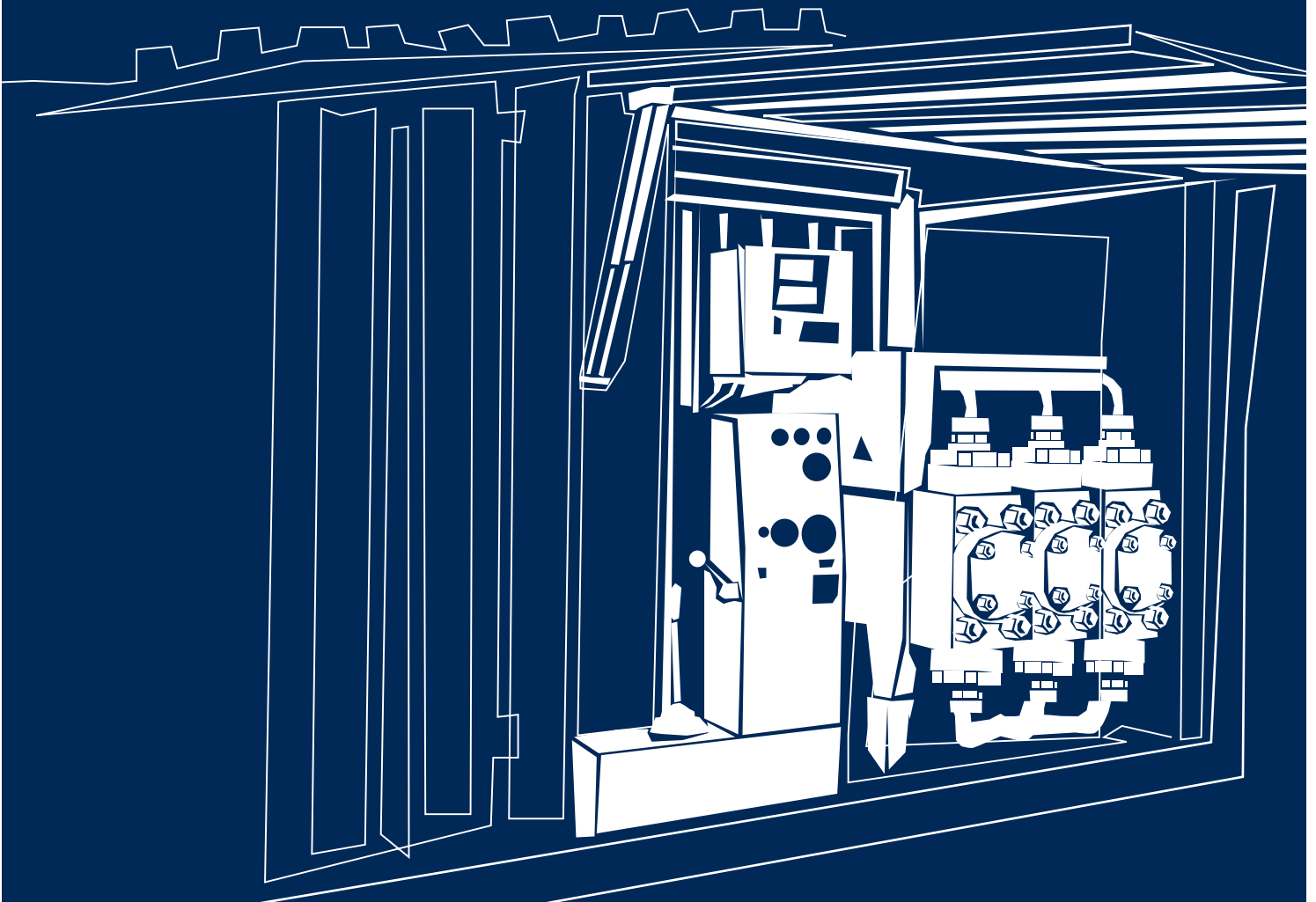


HIGH PRESSURE PUMP

JOB SITE EQUIPMENT



HIGH PRESSURE PUMP

JOB SITE EQUIPMENT

SOILMEC pumps are used for high pressure grout technologies for soil consolidations.

The experience gained in the oilfield as well as in soil improvement over the last two decades, has developed into a sturdy and reliable.

Soilmec pumps are mechanically driven through a system made of clutch, gearbox, cardan joint and chain.

Optionals

- Diesel engines of different brands
- Booster pump
- Visualizing and recording devices for treatment parameters
- Container or skid-mounted version

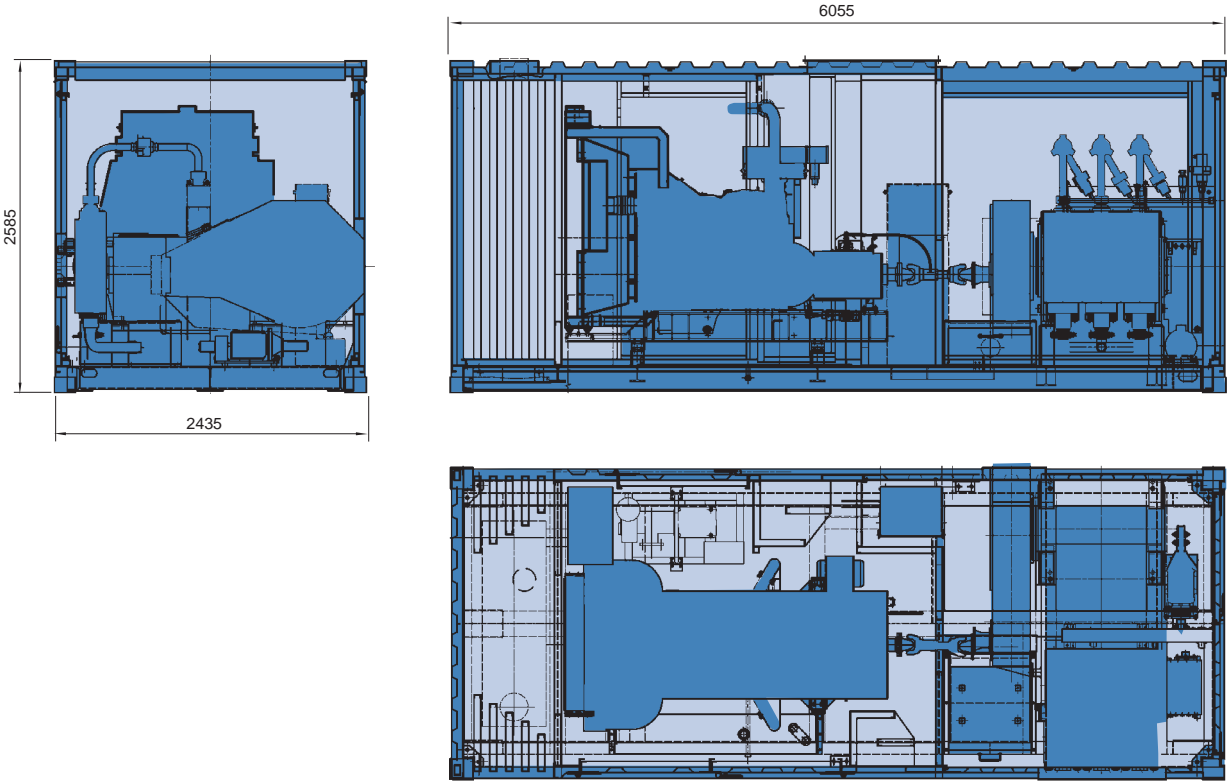


Notes:

- 1) Volumetric efficiency: 100%.
- 2) Mechanical efficiency: 90%
- 3) Max pressure means the max value the pumps can withstand for a few minutes a day, just in case of emergency

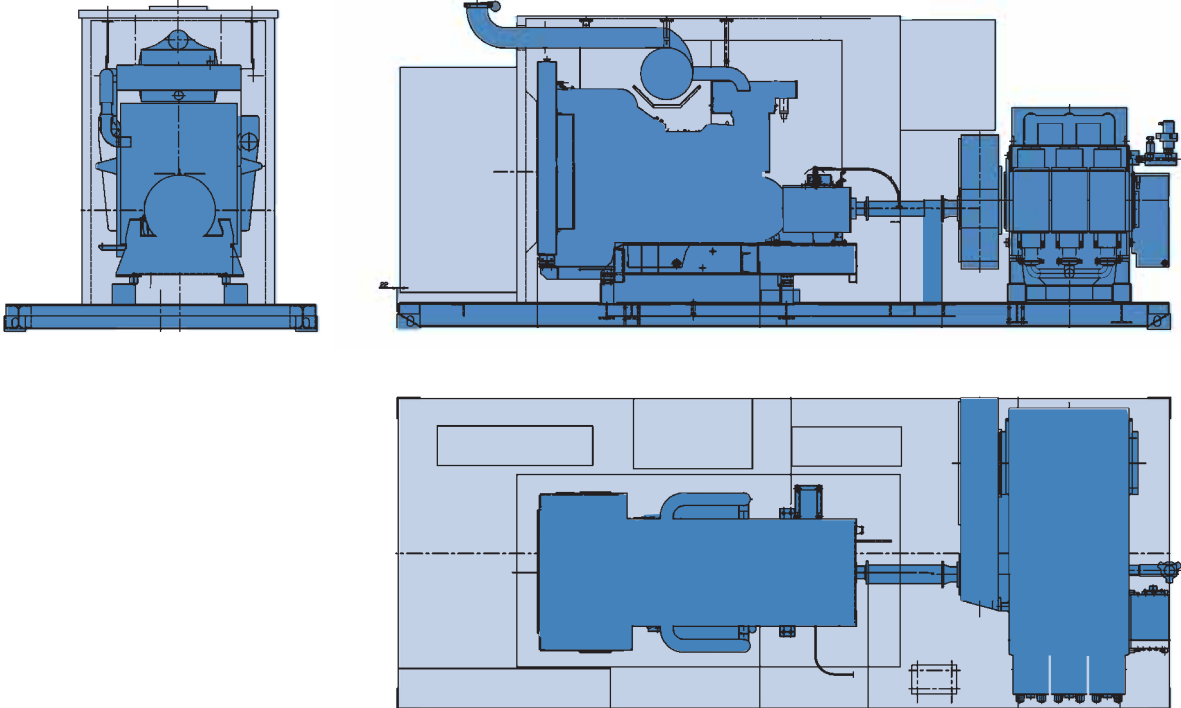
Model	max pressure bar (psi)	max delivery lt./min (G,P,M.)	nominal power kW (HP)
5T-400J	900 (13.050)	442 (116)	298 (400)
7T-500J	900 (13.050)	599 (158)	373 (500)
7T-600J	800 (11.600)	760 (200)	447 (600)
7T-800J	750 (10.880)	614 (162)	597 (800)
7T-1000J	800 (11.600)	682 (180)	746 (1000)

Containerized version*



* only 5T-400J, 7T-500J and 7T-600J

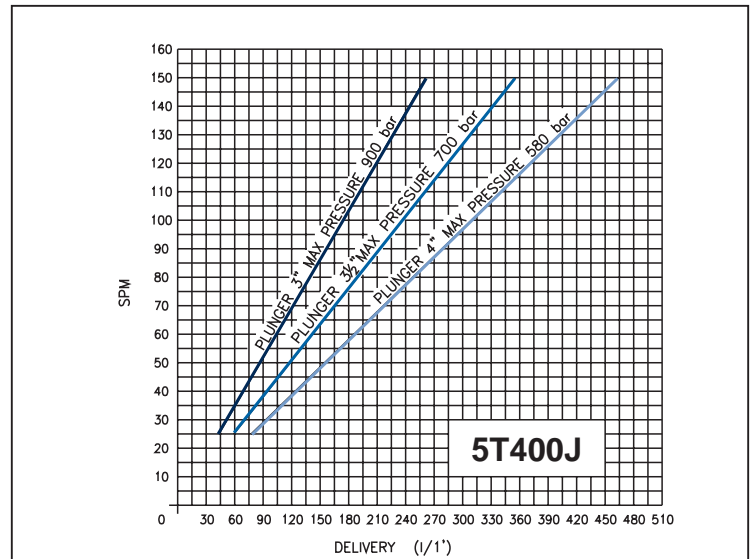
Skid-mounted version



HIGH PRESSURE PUMP

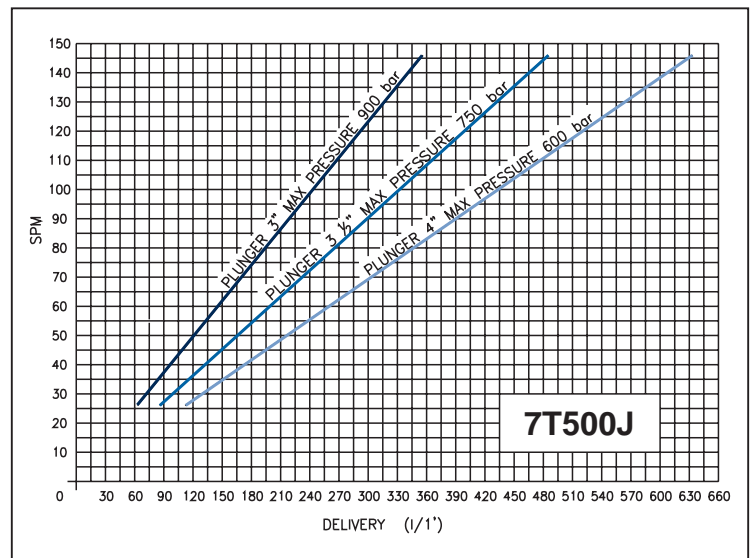
5T-400J

Plunger diameter	in	3 - 3 1/2 - 4
Stroke	in	5
Max discharge press.	bar (P.S.I.)	900 (13.050)
Max delivery	l/min (G.P.M.)	442 (116)
Nominal power	kW (HP)	298 (400)
Mass (approx.)	kg (lbs)	12.500 (27.560)



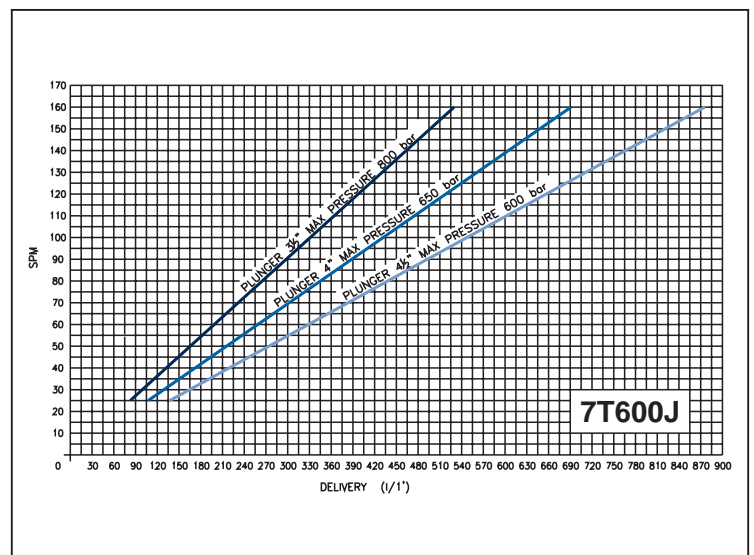
7T-500J

Plunger diameter	in	3 - 3 1/2 - 4
Stroke	in	7
Max discharge press.	bar (P.S.I.)	900 (13.050)
Max delivery	l/min (G.P.M.)	599 (158)
Nominal power	kW (HP)	373 (500)
Mass (approx.)	kg (lbs)	13.400 (29.550)



7T-600J

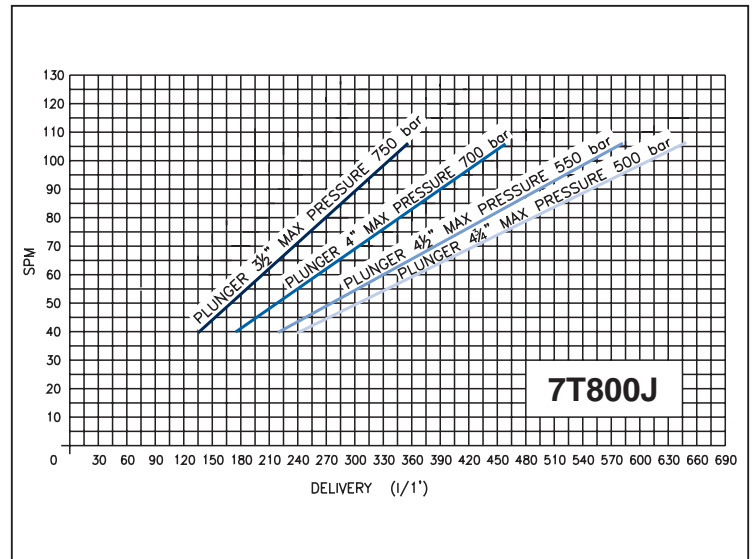
Plunger diameter	in	3 1/2 - 4 - 4 1/2
Stroke	in	7
Max discharge press.	bar (P.S.I.)	800 (11.600)
Max delivery	l/min (G.P.M.)	760 (200)
Nominal power	kW (HP)	447 (600)
Mass (approx.)	kg (lbs)	14.000 (30.870)



HIGH PRESSURE PUMP

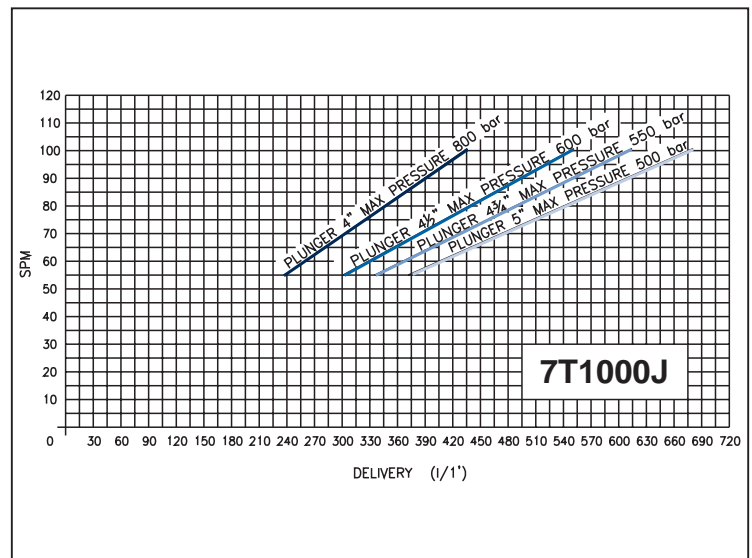
7T-800J

Plunger diameter	in	3 1/2 - 4 - 4 1/2 - 4 3/4
Stroke	in	7
Max discharge press.	bar (P.S.I.)	750 (10.880)
Max delivery	l/min (G.P.M.)	614 (162)
Nominal power	kW (HP)	597 (800)
Mass (approx.)	kg (lbs)	23.000 (50.700)



7T-1000J

Plunger diameter	in	4 - 4 1/2 - 4 3/4 - 5
Stroke	in	7
Max discharge press.	bar (P.S.I.)	800 (11.600)
Max delivery	l/min (G.P.M.)	682 (180)
Nominal power	kW (HP)	746 (1.000)
Mass (approx.)	kg (lbs)	24.000 (52.900)



Details

1. Side view of the pump
2. Visualizing and recording devices for treatment parameters
3. Fluid-end cabin easily accessible from 3 openables sides







SOILMEC distributes machinery and structures all over the world, supported by SOILMEC subsidiary companies and representative offices as:

SOILMEC LTD - U.K.

SOILMEC MISR S.A.E. Co. - Egypt

SOILMEC (H.K.) Limited - Hong Kong

SOILMEC JAPAN CO LTD - Japan

SOILMEC S.P.A. - Beijing Repr. Office - P.R. China

SOILMEC FAR EAST PTE.LTD - Singapore

SOILMEC ARABIA LLC - Saudi Arabia

SOILMEC EMIRATES - U.A.E.

SOILMEC GULF - U.A.E.

SOILMEC FRANCE S.A.S. - France

SOILMEC INDIA - India

SOILMEC S.P.A. - Moscow Repr. Office - Russia

SOILMEC DEUTSCHLAND GmbH - Deutschland

SOILMEC NORTH AMERICA - Boston - USA

CERTIFIED QUALITY SYSTEM

In 1990 Soilmec was awarded with the certification of its Quality System complying with ISO 9001:2000 and ISO 14001:2004 standards.



SOILMEC S.p.A.

Drilling and Foundation Equipment

5819, via Dismano

47023 Cesena (FC) - Italy

tel. +39-0547-319111

fax +39-0547-318548

[http:// www.soilmec.it](http://www.soilmec.it)

e-mail: soilmec@soilmec.it

All technical data are purely indicative and subject to change without notice

soilmec 
Drilling and Foundation Equipment